

COVENTRY ARC FOOTBRIDGE - T-MAT 80 EXPANSION JOINT INSTALLATION



Project Brief

Supply and installation of 1 no. USL Ekspan T-Mat 80 expansion joint.

Project Team

Client: The Manufacturing Technology Centre (MTC)

Main Contractor: Wates Construction

Sub Contractor: USL Ekspan

Background Information

The MTC (Manufacturing Technology Centre) opened in 2011 as a public-sector investment partnership in manufacturing between academia and industry. This purpose built 12,000 square meter facility at Ansty Park, provides a central hub for teaching, developing and demonstrating new technologies and manufacturing processes on an industrial scale, through close collaboration between industry, academia and the Government.

Wates Construction, main contractor for the MTC's development scheme, were responsible for the build of its innovative specialist centers, such as the Advanced Manufacturing Training Centre and the state-of-the-art Aerospace Research Centre.

The MTC's build scheme also included the construction of an Arc footbridge. This 37-meter pedestrian walkway, installed with green tinted frameless glass balustrade to both sides with stainless steel handrails, crosses the manmade lake that runs around the building.

USL Ekspan were contracted by Wates Construction, to supply and install a T-Mat 80 expansion on the footbridge deck.

USL Ekspan's Workscope

This installation was carried out in three stages. The first involved removal of the existing screed, the second was installation of the steel sub-frame and followed by final installation of the T-Mat 80 expansion joint.

USL Ekspan's programme of works included, marking out the areas and depth for break-out and removal of existing screed; lifting, positioning and installation of steel sub-frames supplied by USL Ekspan; installation of a secondary seal; installation of the T-Mat 80 expansion joint complete with clamp plates, fixing studs and bolts supplied by USL Ekspan and application of primer and nosing mortar material with anti-skid finish.

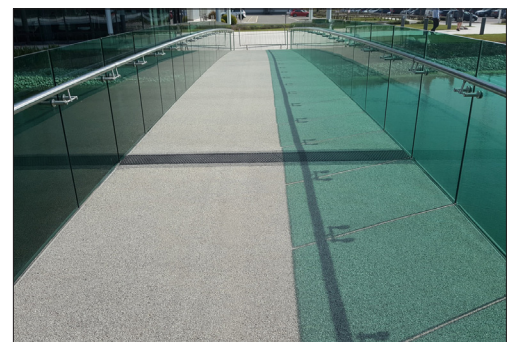
The Coventry Arc is an aesthetically pleasing footbridge, and even more so at night when the fitted LED lights on the hand rails are lit against the contrast of the lake below.



Footbridge deck - joint fitted into position



T-Mat joint installed and prepared for application of nosing mortar



New installed T-Mat 80 expansion joint

Head Office

Kingston House, 3 Walton Road, Pattinson North, Washington, Tyne & Wear, NE38 8QA, UK
t: +44 (0) 191 416 1530 e: info@uslekspan.com www.uslekspan.com